



Thermal Press

The Original Thermal Press®

See more info now at:
www.thermalpress.com/WorkStations.asp
or
Call Us: **877-642-7100**

How the Thermal Press team will improve your business:

- 1) Thermal Press engineering and sales staff is your complete production partner.
- 2) We coordinate and optimize your part design and assembly processes.
- 3) Tap into over 30 years' experience in manufacturing assembly systems & solutions.
- 4) Utilizing the latest in CAD, CAM and FEA technologies.

Services Available:

- ▶ Technical Support
- ▶ Installation & Training
- ▶ Preventative Maintenance
- ▶ Calibration Services
- ▶ Medical Validation/Qualifications

Customers Say:

"I highly recommend Thermal Press whether you have a project that needs the extra effort to iron out some early kinks, or a fully developed process that needs to be implemented in an organized and efficient way."

*-Rich
Medical Mfg, Bay Area, CA*

"Thermal Press knew ahead of time that our company was from a regulated industry (medical device) and therefore knew our strict requirements. I would recommend Thermal Press to any facility requiring precision heat staking equipment."

*-Patrick
Medical Device Mfg, Santa Barbara, CA*

Multi-WorkStation System®

The Multi-WorkStation System by Thermal Press is engineered to be scalable, robust and easy to integrate. The Multi-WorkStation System can be installed into any automated production line. Each WorkStation can function as a standalone workcell or function as part of a multi-operation assembly process. The Multi-WorkStation System utilizes a centralized common control cabinet.

The WorkStation concept is based upon our popular open-format C Series. The Multi-WorkStation System feature easy to integrate thruster-based machines with XY mounts stages for accurate alignment.

Thermal Press WorkStation systems utilize all of our quick-change tooling features and can accommodate all of our standard options and accessories.



Thermal Press machines incorporate the latest technologies of Integrated Digital Control and Monitoring Devices to consistently produce accurate finished assemblies to meet the highest standards of quality and performance testing.

Available Options:

- Quick-Change Tooling Packages
- Servo-Actuators & Controls
- Part Clamping Systems
- Vision and Inspection Systems
- Part Detection and Verification
- Part Loading & Unloading
- Extended Stroke Machine
- Data Acquisition Packages
- Integrated Load-Cell
- Extended Length Cable Runs

Join an elite team today!
Call Us: 877-642-7100
www.thermalpress.com/WorkStations.asp

Your Plastic Assembly Experts - Engineering Solutions since 1976!





Thermal Press
The Original Thermal Press®

See more info now at:
www.thermalpress.com/WorkStations.asp
or
Call Us: **877-642-7100**

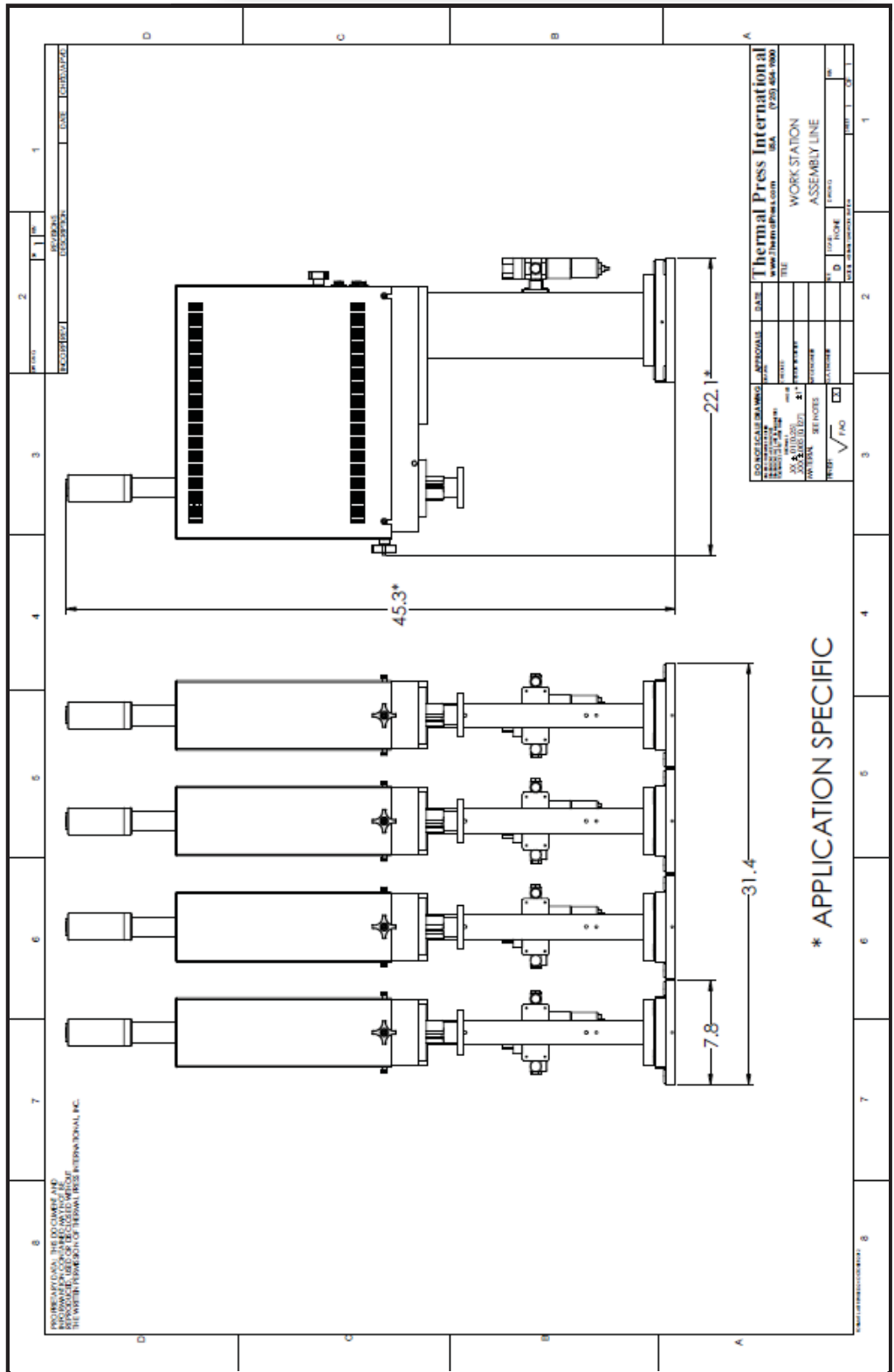
SPECIFICATIONS:

- Electrical:
120VAC (15A MAX)
240VAC (30A MAX)
- Pneumatic:
120 PSI (MAX), 2-4 SCFM
- Standard Stroke: 4 inches (Adj Hard Stop)
- Throat Depth: 7.5 inches (CL to Column)
- *Column Height: 10-20 inches
- Force Output (MAX):
Model WSM25 = 300 lbs (136 kgs)
Model WSM50 = 1000 lbs (450 kgs)
- *Weight: 80 lbs (36 kgs) per WorkStation
- *Work Surface Requirements:
21" W x 32" D x *30-50" H
- * Varies based upon Application Specs

FEATURES:

- Multiple WorkStations with Control Cabinet
- Centralized Communication & Controls
- Scalable for Multi-Workstations Installs
- X-Y Axis Mount Stages for easy Integration
- Open format "C-Frame" Construction
- Made in USA at TPI facility in Livermore, CA
- Integrated Digital PID Temperature Controls
- Integrated Timers & Linear Positional Data
- Velocity Control for precise Travel Speed
- Standard Control Cable Lengths Available
- OSHA, CE, NFPE, and NEC compliant
- Industry Leading 3 Year Warranty

*Note: Thermal Presses are configured and delivered with application specific engineered tooling packages. Actual dimensions and details will vary, based upon the tooling and options included with the system. Thermal Press provides design reviews of the equipment and tooling packages, prior to the manufacturing of the equipment.



Your Plastic Assembly Experts - Engineering Solutions since 1976!